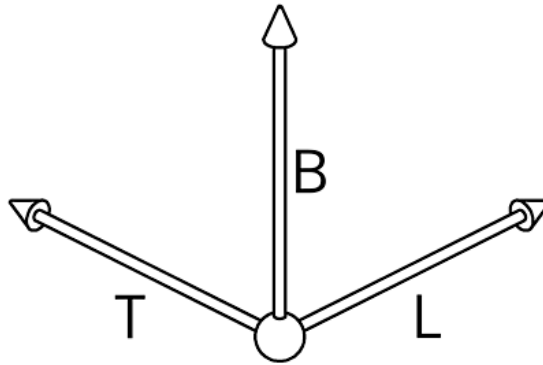
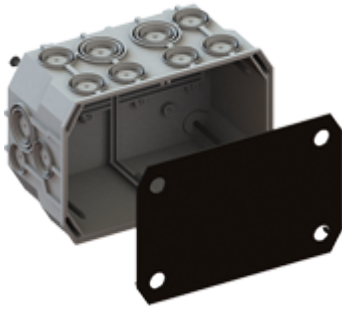


## Box for formwork



- **Material:** Polyethylene
- **Properties:** non-halogen
- **Glow wire test:** 650°C according to EN 60695-2-11
- **Processing temperature:** -5°C / + 60°C
- for wood and steel formwork in on-site mixed concrete as well as flush-mounting (masonry) installations
- for vertical formwork attached with adhesive, the casings must be secured with the telescopic support 9957
- End cover (plastic): fire resistance 750°C
- **Length:** 170 mm
- **Width:** 115 mm
- **Depth:** 95 mm
- **Break-out openings Ø 20 mm:** 2
- **Combination conduit entries M20/25:** 14
- **Combination conduit entries M20/25/32:** 6
- **Number of nails:** 4

### **Art. No.:** 9911.01

- **Inner packaging:** ST
- **Outer packaging:** 5 ST
- **Individual net weight:** 284,000 G
- **EAN:** 7611614037578
- **ETIM40:** EC002601