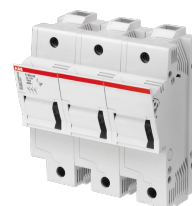


E 93/125s



E 93/125s Fuse disconnecter

General Information

Extended Product Type	E 93/125s
Product ID	2CSM204922R1801
EAN	8012542586425
Catalog Description	E 93/125s Fuse disconnecter
Long Description	E 90 50/125 fuse holders are appropriate to protect against overloads and short circuits. They are designed for use with cylindrical fuses from 50 to 125 A.

Ordering

EAN	8012542586425
Minimum Order Quantity	1 piece
Customs Tariff Number	85363030

Dimensions

Product Net Width	0.105 m
Product Net Height	0.112 m
Product Net Depth / Length	0.07326 m
Product Net Weight	0.405 kg

Container Information

Package Level 1 Units	1 piece
Package Level 1 Width	0.113 m
Package Level 1 Height	0.07 m
Package Level 1 Depth / Length	0.140 m
Package Level 1 Gross Weight	0.54 kg
Package Level 1 EAN	8012542049227

Environmental

RoHS Status	Following EU Directive 2011/65/EU
-------------	-----------------------------------

Additional Information

Dimensions	2 modules
Fuse Size	Cylindrical IEC 22x58
Number of Poles	3
Number of Protected Poles	3
Options Provided	With LED
Power Loss	at Rated Operating Conditions per Pole 9.5 W
Product Main Type	E 90
Product Name	Fuse disconnectors
Rated Current (I_n)	100 A
Rated Frequency (f)	50 / 60 Hz
Rated Operational Voltage	690 V AC
RoHS Date	01/01/2014 0.00.00
Suitable For	E 90
Suitable for Product Class	Fuse holders
Voltage Range	690 V AC

Certificates and Declarations (Document Number)

Data Sheet, Technical Information	2CSC444002B0204
Declaration of Conformity - CE	2CSC444009D2701
Environmental Information	See RoHS Information
Instructions and Manuals	Document not available
RoHS Information	2CSC444011K2701

Classifications

ETIM 4	EC000036 - Miniature fuse holder
ETIM 5	EC000036 - Miniature fuse holder
ETIM 6	EC002705 - Holder for cylindrical fuse
ETIM 7	EC002705 - Holder for cylindrical fuse
Object Classification Code	F
WEEE Category	5. Small Equipment (No External Dimension More Than 50 cm)

Categories

Low Voltage Products and Systems → Modular DIN Rail Products → Protection and Safety devices → Cylindrical Fuse Holders and Fuse Switch Disconnectors

