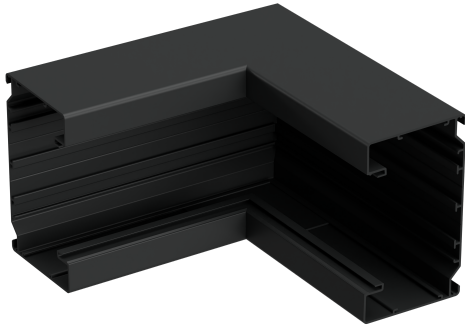


# WGX-A Internal corn. alu 120/72 bl R9017

Reference STA520020



Activity  
Product family  
Brand  
Range

Installation systems  
Trunking accessories  
Stago  
WGX-A

## Base

Activity	Installation systems
Product family	Trunking accessories
Brand	Stago
Range	WGX-A
GTIN	7321679003479

## Commercial and Web

Short description	WGX-A Internal corn. alu 120/72 bl R9017
Medium description	Inside corner, Stago WGX-A, aluminium, 120/72, black RAL9017
Length	200 mm
Width	200 mm
Height	122 mm
Material	Aluminium
Material type or surface treatment	Powder coated
Dimension	120/72
Colour	Black RAL9017

## ETIM (EC000867-Inner corner for wall duct)

Width (EF000008)	200 mm
Depth (EF000049)	72 mm
Shape (EF000051)	Symmetric
Number of covers (EF004430)	0

Cover width 1 (EF005147)	80 mm
Cover width 2 (EF005148)	* mm
Cover width 3 (EF005149)	* mm
Model (EF000010)	Base unit
Angle (EF005434)	90 - 90 °
Material (EF002169)	Aluminium
Material quality (EF001257)	*
Halogen free (EF000025)	Yes
Anti (EF023790)	No
Surface protection (EF000139)	Coated
Colour (EF000007)	Black
RAL (EF000116)	9017
With protective foil (EF005266)	No
With duct connector (EF004826)	No
Mounting perforation in bottom (EF004545)	No
Mounting method cover (EF002922)	Inner lying
With cable fixing clip (EF004815)	No
Degree of protection (IP) (EF005474)	IP20
Impact strength (EF004293)	IK07
Operating temperature (EF001742)	-20 - 60 °C

## Logistic

Pack 1 type	Carton
Quantity pack 1	1
Weight pack 1	0.57 kg
Length pack 1	210 mm
Width pack 1	210 mm
Height pack 1	130 mm
Pack 4 type	Pallet
Quantity pack 4	15
Length pack 4	1200 mm
Width pack 4	800 mm
Height pack 4	340 mm
Customs code	76109090
Net weight	0.55 kg
Country of origin	SE

## Certification

ETIM class	EC000867
------------	----------

## Status product

Product status	Commercialized
----------------	----------------

## Environmental

