

FBS 10-8 BU - Plug-in bridge

3032606

<https://www.phoenixcontact.com/pc/products/3032606>



Please be informed that the data shown in this PDF document is generated from our online catalog. Please find the complete data in the user documentation. Our general terms of use for downloads are valid.



Plug-in bridge, pitch: 8.2 mm, number of positions: 10, color: blue

Your advantages

- The 2- to 50-pos. jumpers can bridge up to 50 terminal blocks in the two bridge shafts of the CLIPLINE complete system in one step

FBS 10-8 BU - Plug-in bridge

3032606

<https://www.phoenixcontact.com/pc/products/3032606>



Technical data

Product properties

Product type	Plug-in bridge
Number of positions	10
Pitch	8.2 mm

Data management status

Article revision	03
------------------	----

Electrical properties

Maximum load current	41 A (The current values for the jumpers can deviate when used in different modular terminal blocks. The precise values can be found in the accessories data for the respective modular terminal blocks.)
----------------------	---

Connection data

Maximum load current	41 A (The current values for the jumpers can deviate when used in different modular terminal blocks. The precise values can be found in the accessories data for the respective modular terminal blocks.)
----------------------	---

Dimensions

Width	80.3 mm
Height	29.6 mm
Depth	29.6 mm
Pitch	8.2 mm

Material specifications

Color	blue (RAL 5015)
Material	Copper
Flammability rating according to UL 94	V0
Insulating material	PA

Environmental and real-life conditions

Ambient conditions

Ambient temperature (operation)	-60 °C ... 110 °C (Operating temperature range incl. self-heating; for max. short-term operating temperature, see RTI Elec.)
Ambient temperature (storage/transport)	-25 °C ... 60 °C (for a short time, no longer than 24 h, -60°C to +70°C)
Ambient temperature (assembly)	-5 °C ... 70 °C
Ambient temperature (actuation)	-5 °C ... 70 °C
Permissible humidity (operation)	20 % ... 90 %
Permissible humidity (storage/transport)	30 % ... 70 %

Mounting

FBS 10-8 BU - Plug-in bridge

3032606

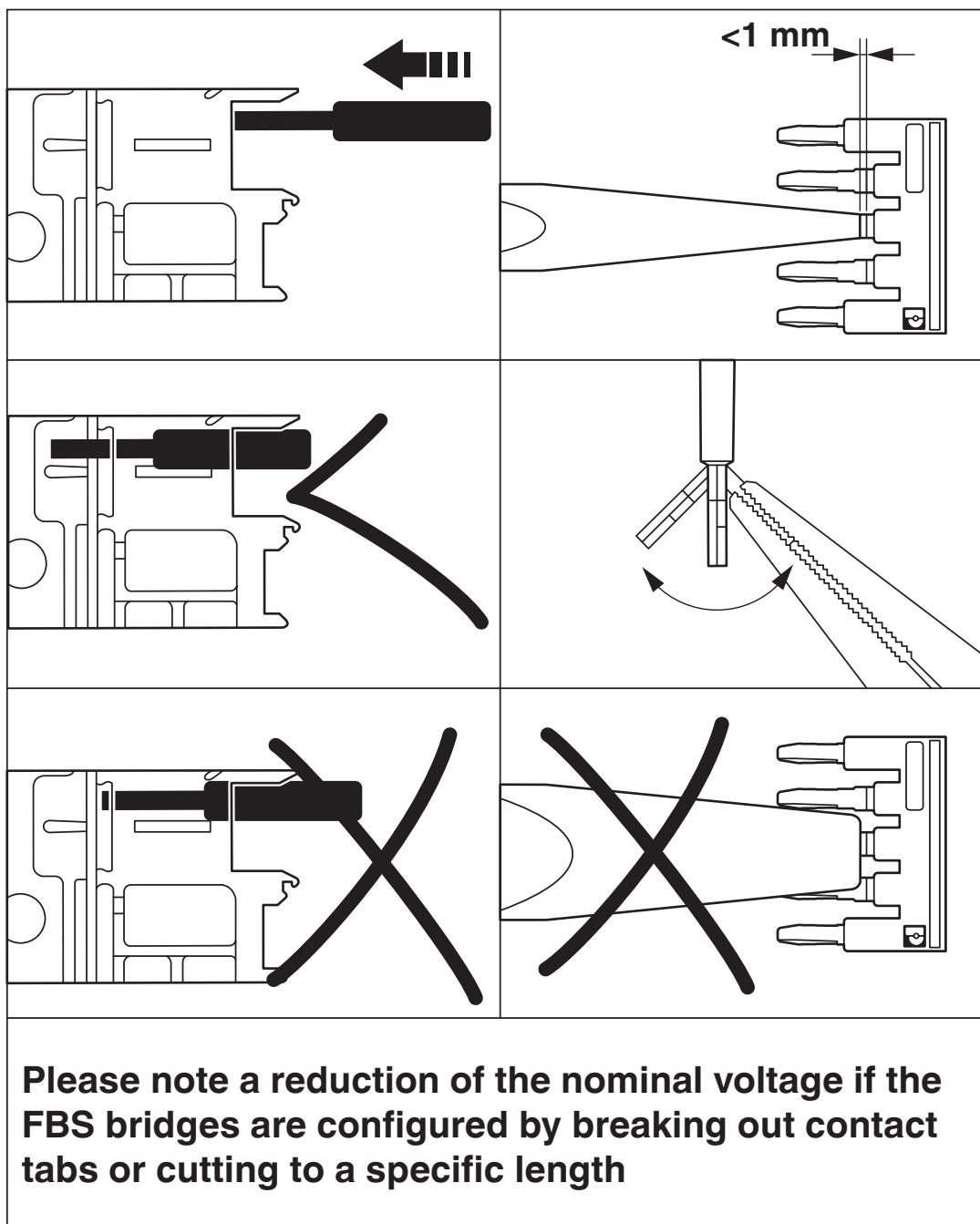
<https://www.phoenixcontact.com/pc/products/3032606>



Mounting type	Plug-in mounting
---------------	------------------

Drawings

Schematic diagram



FBS 10-8 BU - Plug-in bridge



3032606

<https://www.phoenixcontact.com/pc/products/3032606>

Classifications

ECLASS

ECLASS-11.0	27141140
ECLASS-12.0	27141140
ECLASS-13.0	27250303

ETIM

ETIM 9.0	EC000489
----------	----------

UNSPSC

UNSPSC 21.0	39121400
-------------	----------

FBS 10-8 BU - Plug-in bridge

3032606

<https://www.phoenixcontact.com/pc/products/3032606>



Environmental product compliance

EU RoHS	
Fulfills EU RoHS substance requirements	Yes, No exemptions
China RoHS	
Environment friendly use period (EFUP)	EFUP-E
	No hazardous substances above the limits
EU REACH SVHC	
REACH candidate substance (CAS No.)	No substance above 0.1 wt%

Phoenix Contact 2024 © - all rights reserved
<https://www.phoenixcontact.com>

PHOENIX CONTACT GmbH & Co. KG
Flachmarktstraße 8
D-32825 Blomberg
+49 (0) 5235-3 00
info@phoenixcontact.com