

Battery life

Up to 15 years
(1xCR2450)

Dimensions

42x42x8 mm

Operating temperature

-25 to +35 °C
Non-condensing

Cable area

Connections:
1.5–2.5 mm²

Radio

2.4 GHz mesh
Bluetooth®
<10 dBm

Radio range

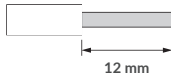
Approx. 10 m indoors.
Battery-powered
products do not
extend the range
of Plejd mesh.

Compliant to standards

Hereby, Plejd AB declares that the radio
equipment type WIN-01 is in compliance
with Directive 2014/53/EU.

The full text of the EU declaration of
conformity is available at the following
internet address: plejd.com/compliance

1136.1.0

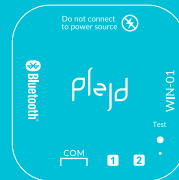


Support

In the event of any technical questions,
please contact our customer service:
support@plejd.com | +46 (0) 10 203 89 91



WIN-01 INSTALLATION MANUAL



Important information

Do not use the product if it has visible
signs of damage.



Disposal and recycling

This electrical product and its batteries
should not be disposed of together with
other household waste. Contact your local
recycling center for guidance on disposal of
batteries, electrical and electronic equipment.

Further information can be found
in the **Plejd** app or at plejd.com

NOTE!

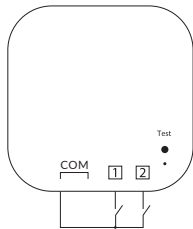
Do not connect WIN-01 to any power source.

Install the product

Step 1. Connect WIN-01 to any type of switch according to the wiring diagram. Twist the cable if it's multi stranded.

Step 2. Push the connected switch or the built-in test button on WIN-01 to activate the product (active for 60 seconds).

Step 3. Add the device in the Plejd app and follow the installation steps. Use the app to complete the installation. Setup requires Bluetooth® and an internet connection.

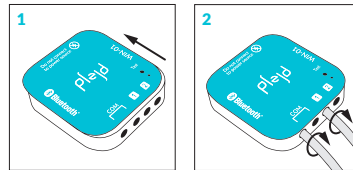


Control input 1 and 2 should be connected to a switch (e.g., push button, light switch, or shutter switch) to wirelessly control other products from Plejd.

Release the cables

Option 1. Slide the cover back in the direction of the arrow to release the cables.

Option 2. Twist the cables to release them.



Replace battery

Remove the cover by using a narrow tool in the hole under the lid and angle upwards. Use the same tool to carefully remove the battery.

