



tesa worldwide

Extranet login

Contact

www.tesa.com

OFFICE &amp; AT HOME CRAFTSMEN INDUSTRY COMPANY

SEARCH

tesa Powerbond® Mounting Tapes Product Finder Ideas &amp; Uses How to use FAQ

How to use

## How to use tesa® double-sided adhesive tapes for mounting

Follow these instructions when using any products in the tesa® Powerbond range.



Do you have any questions or suggestions? Contact us via [e-mail](#)

### Applying tesa® Powerbond double-sided adhesive tapes

tesa® Powerbond mounting tapes are pressure-sensitive so the more pressure you apply during application, the better the connection will be between tape and surfaces. We recommend a minimum of five seconds on every point to develop its full holding force.



Image of hand cleaning wall with spray and cloth

#### 1. Clean the surface

For perfect results ensure both the objects you are sticking and the surfaces they are being applied to are clean of all dust, dirt and fat. Use a lint-free cloth with alcohol or a silicone-free cleanser. If the surface is rough, use a brush to apply the cleaner.

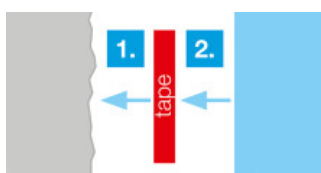


Illustration of rough wall surface

#### 2. Decision about the rougher surface

In order to exert the perfect pressure, tesa® Powerbond has to be fixed on to the rougher surface first. Please decide which is rougher – your object or the surface on which it is to be stuck.

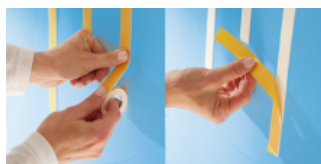


Illustration of correct way to apply tesa® Powerbond double-sided adhesive tape

#### 3. Apply the tape

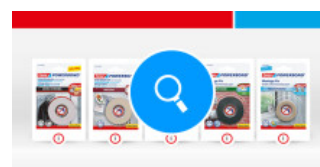
Apply tesa® Powerbond in vertical stripes over the full length of the surface or object. The weakest sticking point will be at the top of the hanging area (see illustration).

At the top, give extra support by adding shorter stripes between the longer ones to reinforce this area. Press the stripes firmly – 5 seconds on each point.



#### 4. Remove the protective foil

Take care not to touch the sticky surface.



#### Which tesa® mounting tape should I use?

We give you guidance to help you find the right tesa® double-sided adhesive tape for you.

[Use our tesa® Powerbond Product Finder](#)



#### What have you been inspired to create?

Here are some ideas we've come up for using tesa® Powerbond double-sided tapes in interesting and creative ways. What uses have you found?

[More Ideas and Uses](#)

Split image of hands applying  
apply tesa® Powerbond  
double-sided adhesive tape  
and removing protective film



Image of hands holding object  
firmly in place



### 5. Fix the object in place

Position the object and press again firmly for 5 seconds on ALL points to ensure the maximum adhesion.

## Removing tesa® Powerbond double-sided adhesive tapes

Please note that these tapes are meant to be a permanent solution and are therefore not removable without leaving residues.

**Trick:** For tesa® Powerbond Ultra Strong, tesa® Powerbond INDOOR, and tesa® Powerbond TRANSPARENT:  
These products can be peeled off slowly and carefully parallel to the surface.