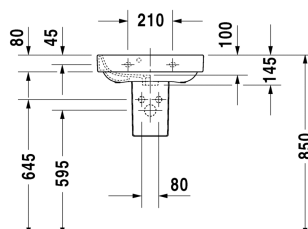
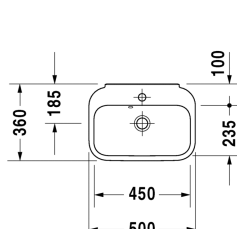


Happy D.2 Handrinse basin # 0709500000

| < 500 mm > |



Handrinse basin	Dimension	Weight	Order number
with overflow, with tap platform, overflow clip chrome included, underneath glazed, 500 mm			
Colors			
00 White Alpin			
Variant			
●	500 x 360 mm	12.300 kilogram	0709500000
Sanitary ceramics with the special WonderGliss surface finish will remain clean and attractive-looking for a long time to come. When ordering WonderGliss please add a "1" as eleventh digit to the model number.			
Suitable products			
Siphon cover for # 070950, 180 x 250 mm	180 x 250 mm		085832
Recommended faucets			
Single lever basin mixer S ceramic cartridge, Projection 91 mm, flexible connection hoses 3/8", aerator adjustable, normal spray, recommended operating pressure 1 - 5 bar, with pop-up waste set,			C11010001
Single lever basin mixer S ceramic cartridge, Projection 91 mm, flexible connection hoses 3/8", aerator adjustable, normal spray, recommended operating pressure 1 - 5 bar, without pop-up waste set,			C11010002
Single lever basin mixer M FreshStart ceramic cartridge, in centre position cold water, projection 135 mm, flexible connection hoses 3/8", flow rate 5,0 l/min (3 bar), normal spray, connection size DN15, maximum temperature can be adjusted on installation, recommended operating pressure 1 - 5 bar, with pop-up waste set,			TU1021001
Single lever basin mixer M FreshStart ceramic cartridge, in centre position cold water, projection 135 mm, flexible connection hoses 3/8", flow rate 5,0 l/min (3 bar), normal spray, connection size DN15, maximum temperature can be adjusted on installation, recommended operating pressure 1 - 5 bar, without pop-up waste set,			TU1021002

Happy D.2 Handrinse basin # 0709500000

|< 500 mm >|

Single lever basin mixer M ceramic cartridge, projection 135 mm, flexible connection hoses 3/8", flow rate 5,0 l/min (3 bar), normal spray, connection size DN15, maximum temperature can be adjusted on installation, recommended operating pressure 1 - 5 bar, without pop-up waste set,

TU1020002

Single lever basin mixer M ceramic cartridge, projection 135 mm, flexible connection hoses 3/8", flow rate 5,0 l/min (3 bar), normal spray, connection size DN15, maximum temperature can be adjusted on installation, recommended operating pressure 1 - 5 bar, with pop-up waste set,

TU1020001

All drawings contain the necessary measurements which are subject to standard tolerances. They are stated in mm and are non-binding. Exact measurements, in particular for customised installation scenarios, can only be taken from the finished piece.