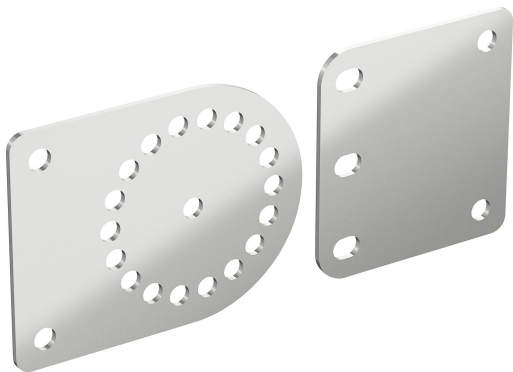


Coupling 51 HDG

Reference 731837



Activity	Cable support systems
Product family	Cable ladders
Brand	Wibe

Commercial and Web

Short description	Coupling 51 HDG
Medium description	Wibe - coupling 51 - steel hot-dip galvanized
Keyword	731837, Wibe Cable Ladders
Material	Steel
Material type or surface treatment	Hot-dip galvanized
Corrosion class	C1; C2; C3; C4

Base

Activity	Cable support systems
Product family	Cable ladders
Brand	Wibe
GTIN	7321677318377

ETIM (EC002413-Connector for cable support system)

Model (EF000010)	Longitudinal joint
Hinged joint horizontal (EF006392)	No
Hinged joint vertical (EF006393)	No
Type of connection (EF000064)	Screw connector
Suitable for wire mesh tray (EF005163)	No
Suitable for cable ladder (EF005165)	Yes
Suitable for cable tray (EF005166)	No
Suitable for cable management system width (EF008339)	150-600 mm

Suitable for cable management system height (EF006391)	55 mm
Suitable for mesh cable tray filament (EF005164)	* mm
Length (EF001438)	* mm
Suitable for circuit integrity (EF007806)	No
Material (EF002169)	Steel
Stainless steel, pickled (EF006388)	No
Material quality (EF001257)	Other
Surface protection (EF000139)	*
Colour (EF000007)	*
RAL (EF000116)	*

Logistic

Quantity pack 1	1
Weight pack 1	1.5
Length pack 1	193
Width pack 1	150
Height pack 1	20
Customs code	73089059
Country of origin	SE

Certification

ETIM class	EC002413
------------	----------

Status product

Product status	Commercialized
----------------	----------------

For the latest information check <http://wibe-group.com/cable-support-systems/cable-ladders/wibe-cable-ladders/accessories/coupling-51-hdg>