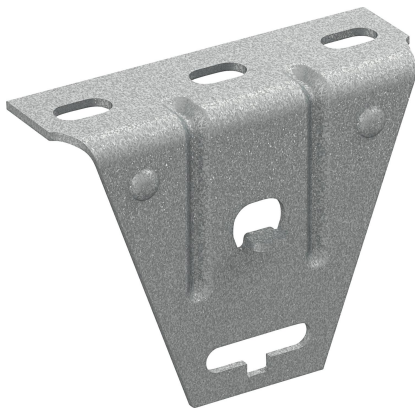


Ceiling bracket 5 PG

Reference 721101



Activity
Product family
Brand

Cable support systems
Support system
Wibe

Commercial and Web

Short description	Ceiling bracket 5 PG
Medium description	Wibe - ceiling bracket 5 - steel pre-galvanized
Keyword	721101, Mesh Trays
Material	Steel
Material type or surface treatment	Pre-galvanized
Corrosion class	C1; C2

Base

Activity	Cable support systems
Product family	Support system
Brand	Wibe
GTIN	7321677211012

ETIM (EC000896-Ceiling bracket for cable support system)

Length (EF001438)	* mm
Width (EF000008)	40 mm
Height (EF000040)	100 mm
Diameter (EF000551)	* mm
Thread size (metric) (EF003563)	10
Model (EF000010)	Ceiling bracket
Load bearing capacity (EF002918)	* kN
Hinging (EF001076)	No

Adjustable (EF000996)	No
Suitable for circuit integrity (EF007806)	No
Material (EF002169)	Steel
Stainless steel, pickled (EF006388)	No
Material quality (EF001257)	Other
Surface protection (EF000139)	Continuously galvanized
RAL (EF000116)	*
Colour (EF000007)	*

Logistic

Pack 1 type	Each
Quantity pack 1	1
Weight pack 1	0.35
Length pack 1	135
Width pack 1	40
Height pack 1	100
Customs code	73089059
Country of origin	SE

Certification

ETIM class	EC000896
------------	----------

Status product

Product status	Commercialized
----------------	----------------

For the latest information check <http://wibe-group.com/cable-support-systems/ceiling-bracket-5-pre-galv>