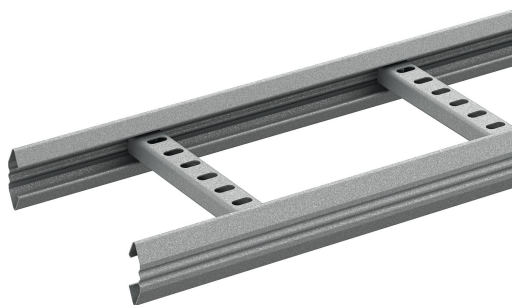


Cable ladder KHZSP-200 4m Pre-galv.

Reference 718572



Activity
Product family
Brand
Range

Cable support systems
Cable ladders
Wibe
KHZSP

Commercial and Web

Short description	Cable ladder KHZSP-200 4m PG
Medium description	Wibe - cable ladder - KHZSP-200 - open side profiles provided with draining holes and perforated rungs - 4 m - steel pre-galvanized
Keyword	718572, Length material
Length	4000
Width	200
Height	55
Material	Steel
Material type or surface treatment	Pre-galvanized
Corrosion class	C1; C2

Base

Activity	Cable support systems
Product family	Cable ladders
Brand	Wibe
Range	KHZSP
GTIN	7321677185726

ETIM (EC000854-Cable ladder/wide span cable ladder)

Type of side joist (EF007666)	Profile (open)
Side wall perforation (EF001122)	No
Type of rung (EF001060)	Perforated profile
Fixation rung (EF008307)	Welded
Height (EF000040)	55 mm

Width (EF000008)	200 mm
Length (EF001438)	4000 mm
Useful cross section (EF005140)	19680000 mm ²
Rung centre spacing (EF008185)	250 mm
Wide span model (EF006397)	No
Suitable for circuit integrity (EF007806)	No
Material (EF002169)	Steel
Material quality (EF001257)	*
Surface protection (EF000139)	Continuously galvanized
Colour (EF000007)	*
RAL (EF000116)	*
Max. safe working load according to IEC 61537 (EF016305)	* N/m
Span between supports according to IEC 61537 (EF015363)	* mm
Load test type according to IEC 61537 (EF015362)	*
Weight (EF000167)	1.98 kg/m

Logistic

Pack 1 type	Each
Quantity pack 1	1
Weight pack 1	7.43
Length pack 1	4000
Width pack 1	198
Height pack 1	55
GTIN pack 1	7321677185726
Pack 4 type	Pallet
Quantity pack 4	30
Weight pack 4	223
Length pack 4	4000
Width pack 4	440
Height pack 4	580
Customs code	73089059
Country of origin	SE

Certification

ETIM class	EC000854
------------	----------

Status product

Product status	Commercialized
----------------	----------------

For the latest information check <http://wibe-group.com/cable-support-systems/cable-ladders/wibe-cable-ladders/length-material/cable-ladder-khzsp-200-4m-pre-galv>