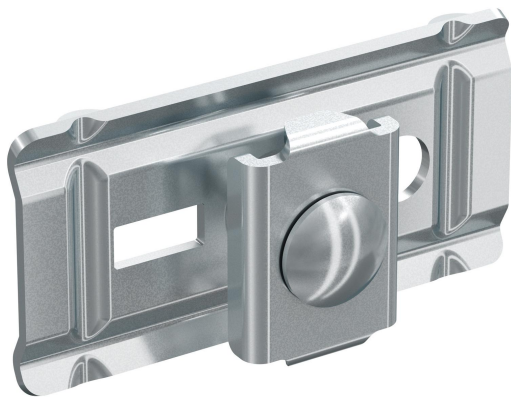


Joining set B52 EG

Reference 1149153



Activity	Cable support systems
Product family	Mesh trays
Brand	Defem
Range	Defem

Commercial and Web

Short description	Joining set B52 EG
Medium description	Defem - joining set B52 - steel electro-galvanized
Keyword	1149153, Defem Mesh Trays
Material	Steel
Material type or surface treatment	Electro-galvanized
Corrosion class	C1

Base

Activity	Cable support systems
Product family	Mesh trays
Brand	Defem
Range	Defem
GTIN	7332227011532

ETIM (EC002413-Connector for cable support system)

Model (EF000010)	Longitudinal joint
Hinged joint horizontal (EF006392)	No
Hinged joint vertical (EF006393)	No
Type of connection (EF000064)	Screw connector
Suitable for wire mesh tray (EF005163)	Yes
Suitable for cable ladder (EF005165)	No
Suitable for cable tray (EF005166)	No

Suitable for cable management system width (EF008339)	53-622 mm
Suitable for cable management system height (EF006391)	110 mm
Suitable for mesh cable tray filament (EF005164)	45-110 mm
Length (EF001438)	* mm
Suitable for circuit integrity (EF007806)	No
Material (EF002169)	Steel
Stainless steel, pickled (EF006388)	No
Material quality (EF001257)	Other
Surface protection (EF000139)	Galvanic/electrolytic zinc plated
Colour (EF000007)	*
RAL (EF000116)	*

Logistic

Pack 1 type	Each
Quantity pack 1	1
Weight pack 1	0.08
Length pack 1	80
Width pack 1	40
Height pack 1	20
Pack 2 type	Bag
Quantity pack 2	10
Weight pack 2	0.9
Length pack 2	160
Width pack 2	150
Height pack 2	40
Pack 3 type	Carton
Quantity pack 3	60
Weight pack 3	5.4
Length pack 3	220
Width pack 3	190
Height pack 3	150
Pack 4 type	Pallet
Quantity pack 4	2400
Weight pack 4	239
Length pack 4	1200
Width pack 4	800
Height pack 4	450
Customs code	73089098
Country of origin	EE

Certification

ETIM class	EC002413
------------	----------

Status product

Product status

Commercialized

For the latest information check <http://wibe-group.com/cable-support-systems/mesh-trays/defem-mesh-trays/accessories/joining-set-b52-zinc-plated>

This information is meant as an indication and cannot be used to ensure fitness with any solution. This file is subject to change, for detailed information, please contact our Customer Service.