

GTVR400

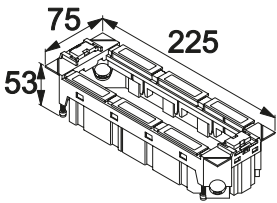
Device carriers for service units VQ12, VR12 or VR10 (centre)

Properties:

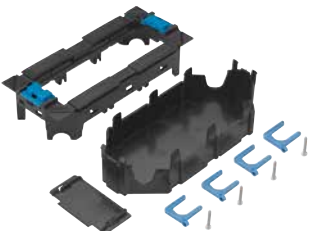
- For 4 Schuko power sockets R45 or up to 3 installation devices with support bracket
- Including 4 strain reliefs and 1 partition wall
- Dimensions: 53 x 75 x 225 mm (H x W x L)
- Assembly type: snap-in, with latch
- Material: PC/ABS, halogen-free
- Delivery colour: graphite black

Note:

- Matching blanking cover 45 x 45 mm in pure white: L4750



Designation	PU	Order no.
Device carrier f 4 installation dev. Rastec	1	GTVR400



GTVR300

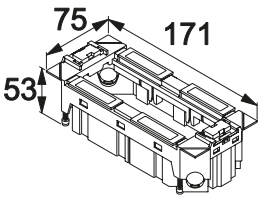
Device carrier for service unit VQ06, VR06 or VR10 (left and right)

Properties:

- For 3 Schuko power sockets R45 or up to 2 installation devices with support bracket
- Including 4 strain reliefs and 1 partition wall
- Dimensions: 53 x 75 x 171 mm (H x W x L)
- Assembly type: snap-in, with latch
- Material: PC/ABS, halogen-free
- Delivery colour: graphite black

Note:

- Matching blanking cover 45 x 45 mm in pure white: L4750



Designation	PU	Order no.
Device carrier f 3 installation dev. Rastec	1	GTVR300



L4750

Blanking cover

Properties:

- 45 x 45 mm
- RAL 9010, pure white

Designation	PU	Order no.
Blanking cover 2M RAL 9010	10	L4750



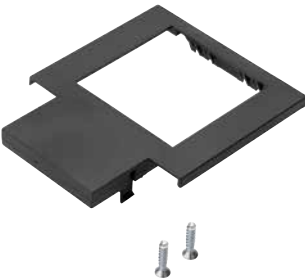
GTVRT00

Device carrier partition wall

Properties:

- for device carrier GTVR400 und GTVR300
- To meet additional demand

Designation	PU	Order no.
Device carrier partition wall for GTVR300/400	1	GTVRT00



GTMBV34T1

Media covers

Properties:

- For installation of support bracket devices in device carrier GTVR400 or GTVR300
- Opening: 48 x 48 mm
- GTMBV34T1 covers: 1/2 GTVR400 or 2/3 GTVR300
- GTMBV30T2 covers: 3/3 GTVR300
- GTMBV04T2 covers: 3/4 GTVR400
- GTMBV04T3 covers: 4/4 GTVR400

Designation	PU	Order no.
Device carrier media cov. f 1 support bracket device	1	GTMBV34T1
Device carrier media cov. f 2 support bracket device	1	GTMBV30T2
Device carrier media cov. f 2 support bracket device	1	GTMBV04T2
Device carrier media cov. f 3 support bracket device	1	GTMBV04T3