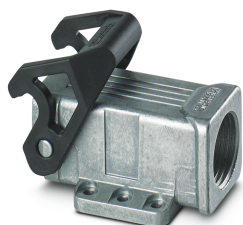


## Housing - HC-STA-D07-SHCWS-1STM20-EL-AL - 1419234

Please be informed that the data shown in this PDF Document is generated from our Online Catalog. Please find the complete data in the user's documentation. Our General Terms of Use for Downloads are valid (<http://phoenixcontact.com/download>)




Box mounting bases D7, with single locking latch, material: Die-cast aluminum, salt water resistant, cable outlets: 1, lateral, height: 27.9 mm, cable gland: none, support sleeve: yes, 1x M20, Standard, enclosed bottom



COMPLETE line

### Key Commercial Data

Packing unit	1 pc
GTIN	 4 055626 159867
GTIN	4055626159867
Weight per Piece (excluding packing)	38.300 g
Custom tariff number	85389099
Country of origin	China
Sales Key	BF7APF

### Technical data

#### Dimensions

Height	27.9 mm
Width	38 mm
Length	24.2 mm

#### Ambient conditions

Degree of protection (IP)	IP66
	IP67
Ambient temperature (operation)	-40 °C ... 125 °C

#### General

Note	for contact inserts HC-A03, A04, D07, D08, Q02, Q03, Q04, Q05, Q07, Q12
Size	D7
Housing type	Box mounting bases
Color	gray aluminum

# Housing - HC-STA-D07-SHCWS-1STM20-EL-AL - 1419234

## Technical data

### General

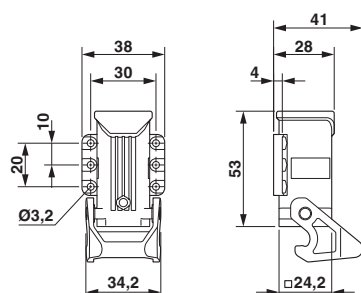
Locking type	with single locking latch
No. of cable outlets	1
Cable outlet	lateral
Screw connection	none
Type of the screw connection	1x M20
Housing material	Die-cast aluminum, salt water resistant
Housing surface material	uncoated
Material lock	PA
Flammability rating according to UL 94	V0 (Interlock)

### Environmental Product Compliance

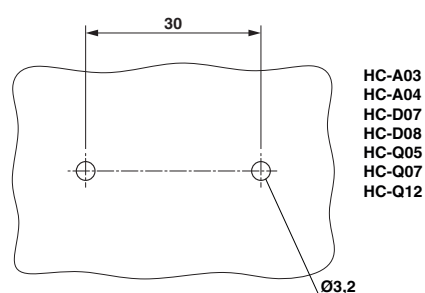
China RoHS	Environmentally Friendly Use Period = 50 years
	For details about hazardous substances go to tab "Downloads", Category "Manufacturer's declaration"

## Drawings

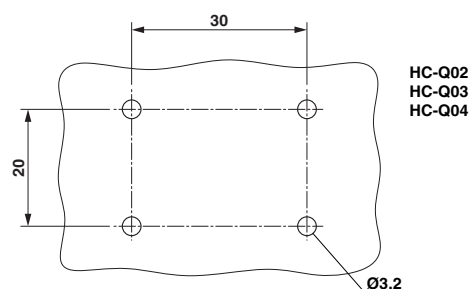
Dimensional drawing



Dimensional drawing



Dimensional drawing



Drill hole spacing

## Classifications

eCl@ss

eCl@ss 10.0.1	27440202
eCl@ss 11.0	27440202
eCl@ss 5.1	27261200

# Housing - HC-STA-D07-SHCWS-1STM20-EL-AL - 1419234

## Classifications

### eCl@ss

eCl@ss 6.0	27261200
eCl@ss 7.0	27440202
eCl@ss 9.0	27440202

### ETIM

ETIM 6.0	EC000437
ETIM 7.0	EC000437

### UNSPSC

UNSPSC 13.2	31261501
UNSPSC 18.0	31261501
UNSPSC 19.0	31261501
UNSPSC 20.0	31261501
UNSPSC 21.0	31261501

## Approvals

### Approvals

#### Approvals

EAC / UL Recognized / cUL Recognized / DNV GL / EAC / cULus Recognized

#### Ex Approvals

### Approval details

EAC		RU C- DE.AI30.B.01102
-----	-------------------------------------------------------------------------------------	--------------------------

UL Recognized		<a href="http://database.ul.com/cgi-bin/XYV/template/LISEXT/1FRAME/index.htm">http://database.ul.com/cgi-bin/XYV/template/LISEXT/1FRAME/index.htm</a>	E255026
---------------	-------------------------------------------------------------------------------------	-------------------------------------------------------------------------------------------------------------------------------------------------------	---------

cUL Recognized		<a href="http://database.ul.com/cgi-bin/XYV/template/LISEXT/1FRAME/index.htm">http://database.ul.com/cgi-bin/XYV/template/LISEXT/1FRAME/index.htm</a>	E255026
----------------	-------------------------------------------------------------------------------------	-------------------------------------------------------------------------------------------------------------------------------------------------------	---------

DNV GL		<a href="https://approvalfinder.dnvgl.com/">https://approvalfinder.dnvgl.com/</a>	TAE000037S
--------	-------------------------------------------------------------------------------------	-----------------------------------------------------------------------------------	------------

## Housing - HC-STA-D07-SHCWS-1STM20-EL-AL - 1419234

### Approvals

EAC



RU C-  
DE.BL08.B.00511

cULus Recognized



### Accessories

#### Accessories

##### Corrugated pipe screw connection

Screw connection - WP-G HF IP66 M20 BK - 3240898



Cable gland, metric thread, IP66 protection, straight

Screw connection - WP-G HF IP69K M20 BK - 3240884



Cable gland, metric thread, IP68/69k protection, straight

Screw connection - WP-GA HF IP66 M20 BK - 3240926



Cable gland, metric thread, IP66 protection, angled

Screw connection - WP-GA HF IP69K M20 BK - 3240912



Cable gland, metric thread, IP68/69k protection, angled

## Housing - HC-STA-D07-SHCWS-1STM20-EL-AL - 1419234

### Accessories

Screw connection - WP-GR HF IP66 M20 BK - 3240954



Cable gland, metric thread, IP66 protection, with strain relief

---

Screw connection - WP-GR HF IP69K M20 BK - 3240940



Cable gland, metric thread, IP68/69k protection, with strain relief

---

Screw connection - WP-G PP HF M20 - 3240998



Cable gland made from PP with metric thread, IP65 protection

---

Screw connection - WP-GT PP HF M20 - 3241012



Cable gland made from PP with metric thread, rotatable, IP54 protection

---

Screw connection - WP-G BRASS IP40 M20 - 3241047



Cable gland made from brass with metric thread, IP40 protection

---

## Housing - HC-STA-D07-SHCWS-1STM20-EL-AL - 1419234

### Accessories

Screw connection - WP-GT BRASS M20 - 3241033



Cable gland made from brass with metric thread, rotatable, IP40 protection

---

Screw connection - WP-G BRASS IP65 M20 - 3241061



Cable gland made from brass with metric thread, IP65 protection

---

### Full screw connection

Cable gland - G-INS-M20-S68N-NNES-S - 1411163



Cable gland, cable gland material: Nickel-plated brass, external cable diameter 6 mm ... 12 mm, shielding: no, connecting thread: M20 x 1.5, color: silver, with O-ring

---

Cable gland - G-INSEC-M20-S68N-NCRS-S - 1411189



Cable gland, cable gland material: Nickel-plated brass, external cable diameter 9 mm ... 13 mm, shielding: yes, connecting thread: M20 x 1.5, color: silver, with O-ring

---

Cable gland - G-INS-M20-S68N-PNES-GY - 1411125



Cable gland, cable gland material: PA, external cable diameter 6 mm ... 12 mm, shielding: no, connecting thread: M20 x 1.5, color: silver-gray RAL 7001

---

## Housing - HC-STA-D07-SHCWS-1STM20-EL-AL - 1419234

### Accessories

Cable gland - G-INS-M20-S68N-PNES-BK - 1411133



Cable gland, cable gland material: PA, external cable diameter 6 mm ... 12 mm, shielding: no, connecting thread: M20 x 1.5, color: jet black RAL 9005

---

### Housing latches

Housing brackets - HC-D07-SL-PLBK - 1424440



Replacement latch for HC-D7 housing

---

### Labeled device marker

Plastic label - US-EMLP (11X9) CUS - 0830073



Plastic label, can be ordered: by card, white, labeled according to customer specifications, mounting type: adhesive, lettering field size: 11 x 9 mm, Number of individual labels: 135