

# Foot Switches

## IPS Foot Switches with Covers, IPM Mini Foot Switches Description

### Application

Foot switch operated machines such as: shearing machines, folding machines, spinning lathes, machine tools, wrapping machines, riveting presses, etc.

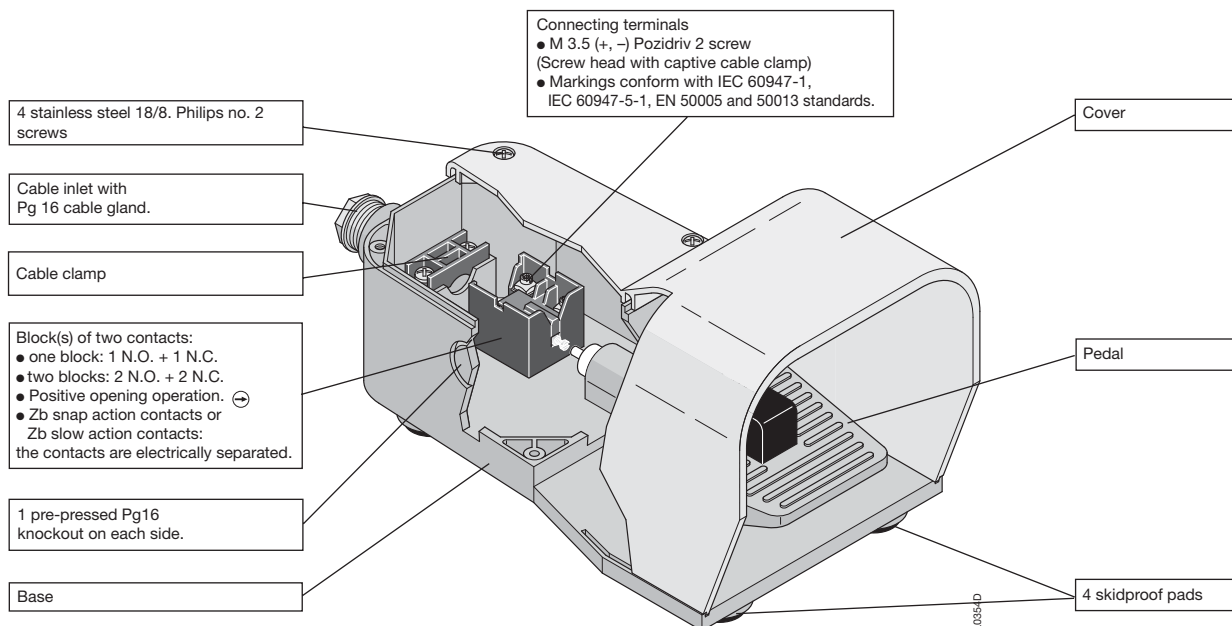
Foot switches with covers come in three operation formats:

- **Free movement:** contact position follows pedal movement: actuated when the pedal is pushed down, released when pedal is in a state of rest.
- **Foot switch locked in neutral position:** same operation as above, after unlocking the pedal with the end of the foot.
- **Foot switch latched in low position:** same operation as free movement, except that a state of rest is obtained only after having unlatched the pedal with the end of the foot.

### Description of IPS Foot Switches with Covers

- **Dimensions:** 285 x 140 x 145.
- **Materials:** base, cover and pedal made of shock resistant Bayblend® FR 90 material (alloyed polycarbonate and ABS).
- **Colour choice:** grey base; grey, yellow or red cover.
- **Variations:** grey base, half-red cover. Especially used for emergency stop function.

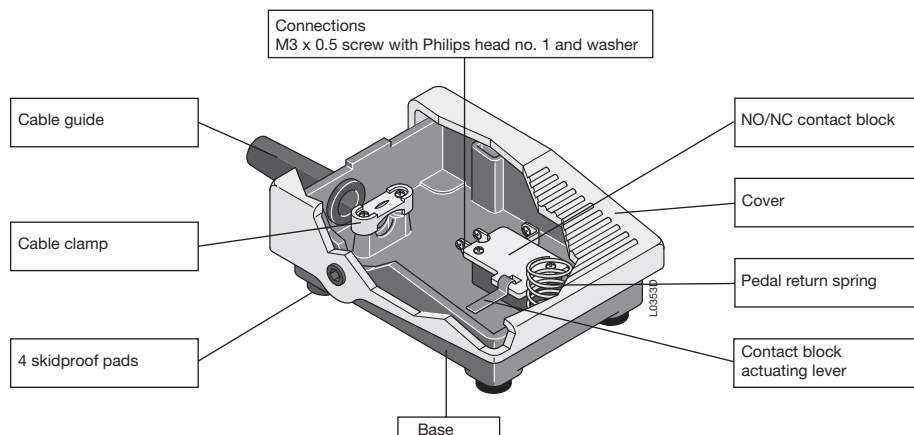
**Note:** this emergency stop function must never contain the «locked in neutral position» device.



**On request:** Foot switches with covers can be assembled on a plate and equipped with a transportation handle. Instead of the handle an emergency stop button can be installed above a tube that allows for connection cable passage. (see the catalogue of separate elements)

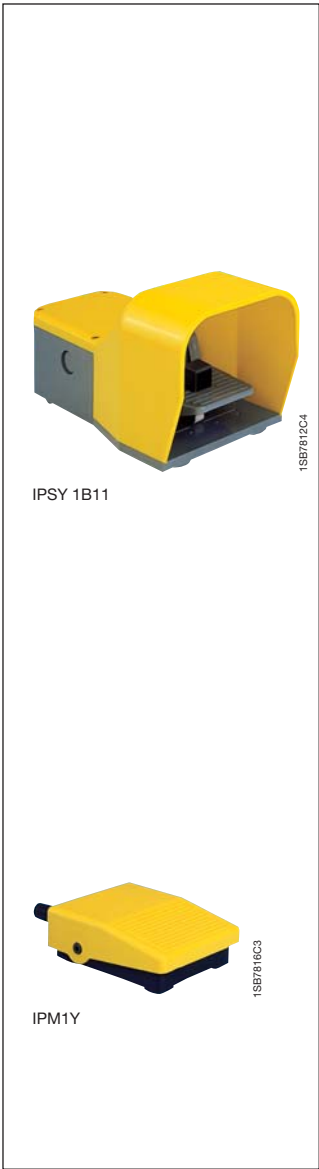
### Description of IPM Mini Foot Switches

- **Reduced dimensions:** 100 x 75 x 34 mm.
- **Materials:** cover and base made of self-extinguishing ABS.
- **Colour choice:** black or grey base; black, grey, yellow or red cover.



# Foot Switches

## IPS Foot Switches with Covers IPM Mini Foot Switches



IPSY: Yellow Cover .....Y.....5  
 IPSG: Grey Cover .....G.....6  
 IPSR: Red Cover .....R.....8

### Ordering Details

Contact blocks	Type	Order code	Weight kg (1)
Snap action			
Non-overlapping			
Slow action			
13 21 Zb			
14 22			
B11	state colour code	state colour code	Pack <sup>ing</sup> 1 piece
D11			

### Free Movement

1	-	IPS 1B11	1SBV 002 10 R1211	1.100
-	1	IPS 1D11	1SBV 002 10 R1411	1.100

### Locked in Neutral Position

1	-	IPS 2B11	1SBV 002 20 R1211	1.100
-	1	IPS 2D11	1SBV 002 20 R1411	1.100

### Latched in Low Position

1	-	IPS 3B11	1SBV 002 30 R1211	1.100
-	1	IPS 3D11	1SBV 002 30 R1411	1.100

### Ordering Details

Contact blocks	Cover colour	Type	Order code	Weight kg (1)
NC NO				
C				
N.O. / N.C.				Pack <sup>ing</sup> 1 piece

### Black Base

1	Yellow	IPM1Y	1SBV 001 101 R1823	0.130
1	Grey	IPM1G	1SBV 001 102 R1823	0.130

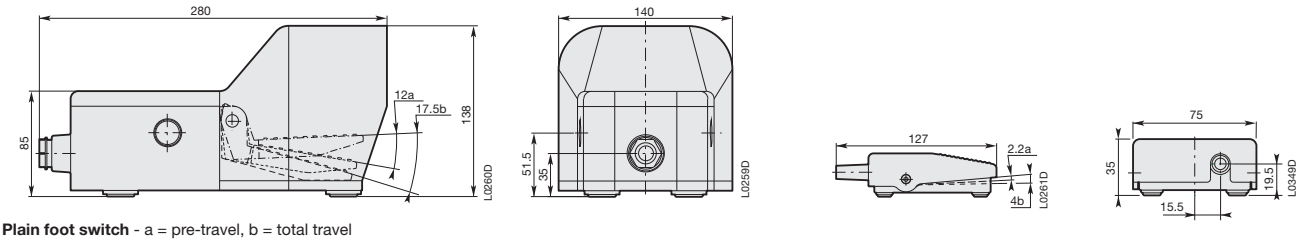
### Grey Base

1	Yellow	IPM2Y	1SBV 001 105 R1823	0.130
1	Grey	IPM2G	1SBV 001 106 R1823	0.130

## Dimensions (mm)

### Foot Switches with cover

### Mini Foot Switches



Plain foot switch - a = pre-travel, b = total travel

