

COMBINED AIR RELEASE VALVES



Design features

- This arrangement eliminates expensive valve chambers
- The stand pipe protects the automatic air valve
- An automatic shut-off valve enables the equipment to be easily removed for inspection and reinstalled under pressure
- The materials used for the air release valve guarantee absolute corrosion resistance
- Excess water is drained away through an DN 1/2" ISO-pipe-fitting
- For below-ground installation a surface box with minimum opening of 300 mm diameter is required. Gravel backfilling should be used to prevent rain water from accumulating in the surface box (see Illu. 2 page N 5/2)
- The air release valve can be shortened by 100 mm by cutting the standpipe 5 and extension pipe 3 at the red marks
- Valve only for air release: on request (minimum pressure of 0,3 bar needed)

No. 9822

No. 9823



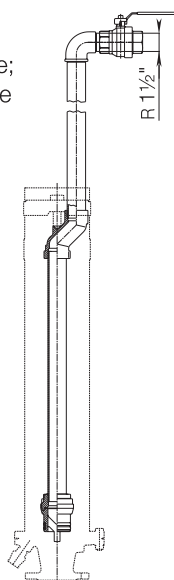
**Air valve for releasing air only:
(with air inflow stop) on
request**
(see over page illu. 3)

Material | Technical features

- **Standpipe** made of stainless steel
- **Air release valve** made of POM and brass
- **Max. air release capacity:** 3,2 m³/min
- **Inlet flange:** DN 50 or DN 80
sized and drilled according to
EN 1092-2 | PN 16

Suitable accessories

- Surface box No. 1790
- **Flushing stand pipe** including shut-off valve; Instead of the air valve assembly a stand pipe can be supplied for water main flushing and for general water discharge



Order No.	L	Weight	
9824	755	4,70	
	1055	5,80	
	1305	6,75	
	1555	9,50	

L = Total length of the combined air release valve

Order No.	Working pressure bar	DN	Installation depth		L*	Weight	
			Above ground (Illu.1)	Below-ground (Illu.2)			
9822	PN 1 - PN 16	50	0,75 m	1,00 m	755	22,0	
			1,00 m	1,25 m	1055	25,5	
			1,25 m	1,50 m	1305	29,0	
			1,50 m		1555	33,5	
		80	0,75 m	1,00 m	755	23,5	
			1,00 m	1,25 m	1055	27,0	
			1,25 m	1,50 m	1305	30,0	
			1,50 m		1555	31,0	
9823	PN 0,1 - PN 6	50	0,75 m	1,00 m	755	22,0	
			1,00 m	1,25 m	1055	25,5	
			1,25 m	1,50 m	1305	30,0	
			1,50 m		1555	33,0	
		80	0,75 m	1,00 m	755	24,0	
			1,00 m	1,25 m	1055	28,0	
			1,25 m	1,50 m	1305	30,0	
			1,50 m		1555	33,0	

*L = 100 reducible

Minimum length = 650
Maximum length = 2500

PN 25 on request

Application example



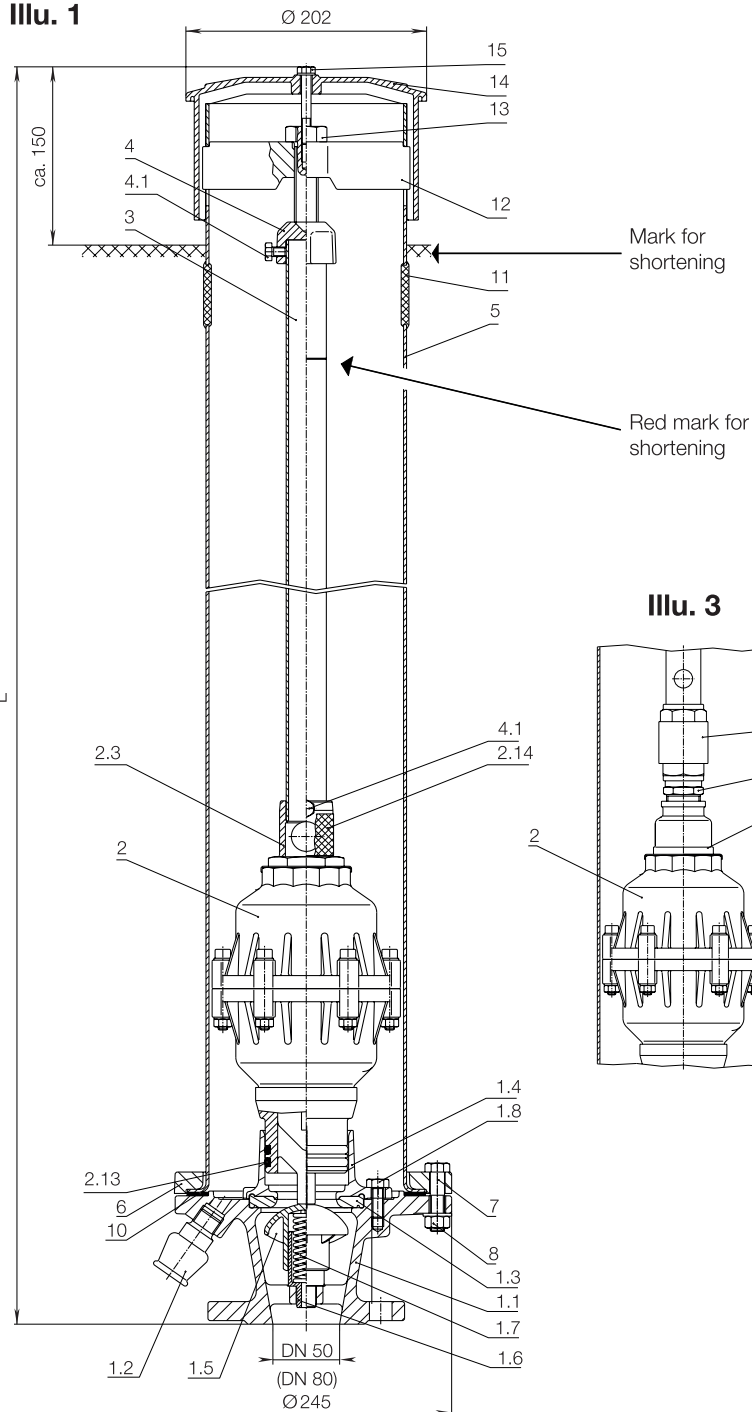
E. Hawle Armaturenwerke GmbH 4840 Vöcklabruck - Austria - Wagrainstraße 13
Tel.: +43 (0) 7672 72576 0 - Fax: +43 (0) 7672 78464 - E-Mail: hawle@hawle.at - www.hawle.com

N 5/1

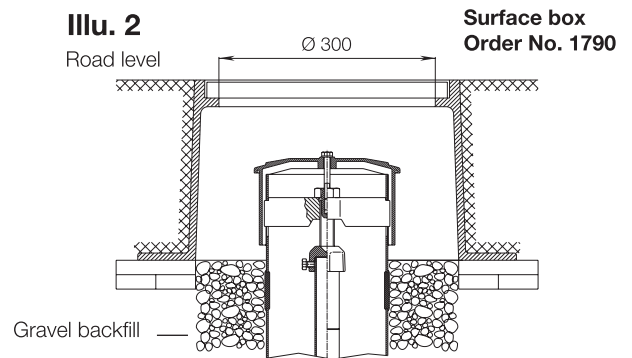
COMBINED AIR RELEASE VALVES



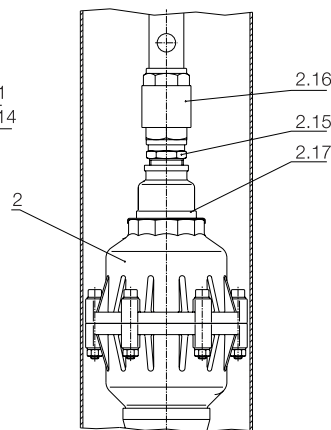
Illu. 1



Illu. 2



Illu. 3



	Parts	Material
1.1	Inlet flange	Ductile iron
1.2	Drain-off fitting	Ductile iron
1.3	Seal	Elastomer
1.4	Foot valve flange	Brass
1.5	Foot valve	POM
1.6	Spring case	POM
1.7	Spring	Stainless steel
1.8	Hexagon bolt M 10	Stainless steel
2	Air valve	see page N 2/1
2.3	Seat	Brass/Elastomer
2.13	O-ring	Elastomer
2.14	Insect protective grid	Stainless steel
2.15	Double nipple	Brass
2.16	Non return valve	Brass
2.17	Reducing socket	Brass
3	Pipe	Stainless steel
4	Coupling	Ductile iron
4.1	Hexagon bolt	Stainless steel
5	Stand pipe	Stainless steel
6	Lock ring	Ductile iron
7	Hexagon bolt M 12 x 55	Stainless steel
8	Hexagon nut	Stainless steel
10	Seal	Elastomer
11	Blind cover	Elastomer
12	Spindle support	
13	Operating bolt	Stainless steel
14	Hood	HDPE
15	Hexagon bolt	Stainless steel

N 5/2



E. Hawle Armaturenwerke GmbH 4840 Vöcklabruck - Austria - Wagrain Straße 13
Tel.: +43 (0) 7672 72576 0 - Fax: +43 (0) 7672 78464 - E-Mail: hawle@hawle.at - www.hawle.com