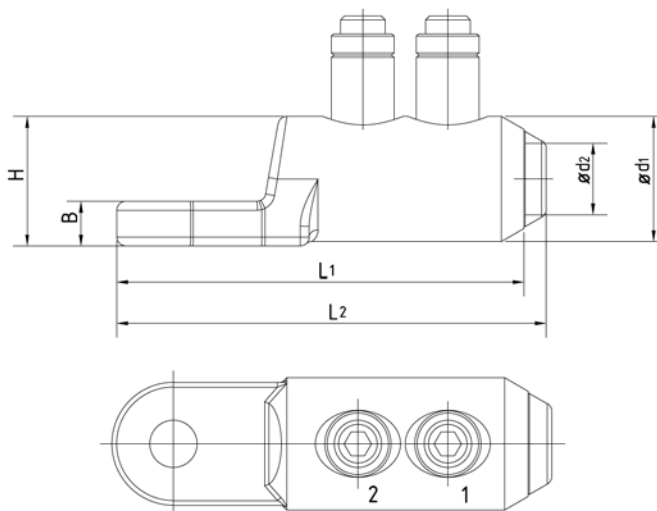




## SICON bolted cable lug

The special design of SICON bolts means that there are no fixed predetermined break points in the thread. Instead the bolt always breaks reliably at the surface of the clamp body.

- Nothing protrudes from the clamp body
- Full use of the thread load rating for any conductor cross section
- No special tools needed
- Smooth breakage of the shear bolt simplifies tightening



No.	Tap plate mounting hole Ø (mm)	Number of bolts	Width across flats	Diameter D1 Ø d1 (mm)	Diameter D2 Ø d2 (mm)	Dimension L <sub>1</sub> L <sub>1</sub> (mm)	Dimension L <sub>2</sub> L <sub>2</sub> (mm)	Packing unit
332 604 010	13	1	SW 5	24	13	70	75	12
332 599 010	13	2	SW 5	28	16.3	91	96	12
332 595 010	13	2	SW 6	33	20	115	117	12
332 595 011	16.5	2	SW 6	35	20	120	122	12
332 605 010	13	2	SW 8	38	24	120	123	12
332 605 011	16.5	2	SW 8	35	24	120	123	12
332 625 010	13	3	SW 8	42	26	138	141	12
332 625 011	16.5	3	SW 8	42	26	138	141	12
332 606 010	16.5	3	SW 8	50	33	180	184	6

No.	Al (mm <sup>2</sup> )	Al (mm <sup>2</sup> )	Al (mm <sup>2</sup> )	Al (mm <sup>2</sup> )	Al (mm <sup>2</sup> )	Cu (mm <sup>2</sup> )	Cu (mm <sup>2</sup> )	Cu (mm <sup>2</sup> )	Cu (mm <sup>2</sup> )
332 604 010	10 - 95	10 - 95	10 - 95	50 - 95	35 - 70	10 - 95	10 - 95	10 - 95	35 - 70
332 599 010	25 - 150	25 - 150	25 - 150	35 - 120	35 - 120	25 - 150	25 - 150	25 - 150	35 - 120
332 595 010	50 - 240	50 - 185	50 - 240	50 - 185	50 - 150	50 - 240	50 - 185	50 - 240	50 - 150
332 595 011	50 - 240	50 - 185	50 - 240	50 - 185	50 - 150	50 - 240	50 - 185	50 - 240	50 - 150
332 605 010	95 - 400	95 - 300	95 - 300	95 - 240	95 - 240	95 - 400	95 - 300	95 - 300	95 - 240
332 605 011	95 - 400	95 - 300	95 - 300	95 - 240	95 - 240	95 - 400	95 - 300	95 - 300	95 - 240
332 625 010	185 - 500	185 - 400	185 - 400	185 - 240	185 - 240	185 - 500	185 - 400	185 - 400	185 - 240
332 625 011	185 - 500	185 - 400	185 - 400	185 - 240	185 - 240	185 - 500	185 - 400	185 - 400	185 - 240
332 606 010	300 - 800	300 - 630	300 - 630	-	300 - 400	300 - 800	300 - 630	300 - 630	300 - 400