

Frame 1gang, illuminated

Order no.: 1338 35 0xx, 1338 35 1xx

Frame 2gang, illuminated

Order no.: 1339 35 1xx

Installation instructions**1 Safety instructions**

Electrical equipment may only be installed and assembled by a qualified electrician in accordance with the relevant installation standards, regulations, directives and safety and accident prevention directives of the country.

Hazard due to electric shock. Disconnect before working on the device or load. Take into account all circuit breakers that supply dangerous voltages to the device or load.

Failure to comply with these installation instructions may result in damage to the device, fire or other hazards.

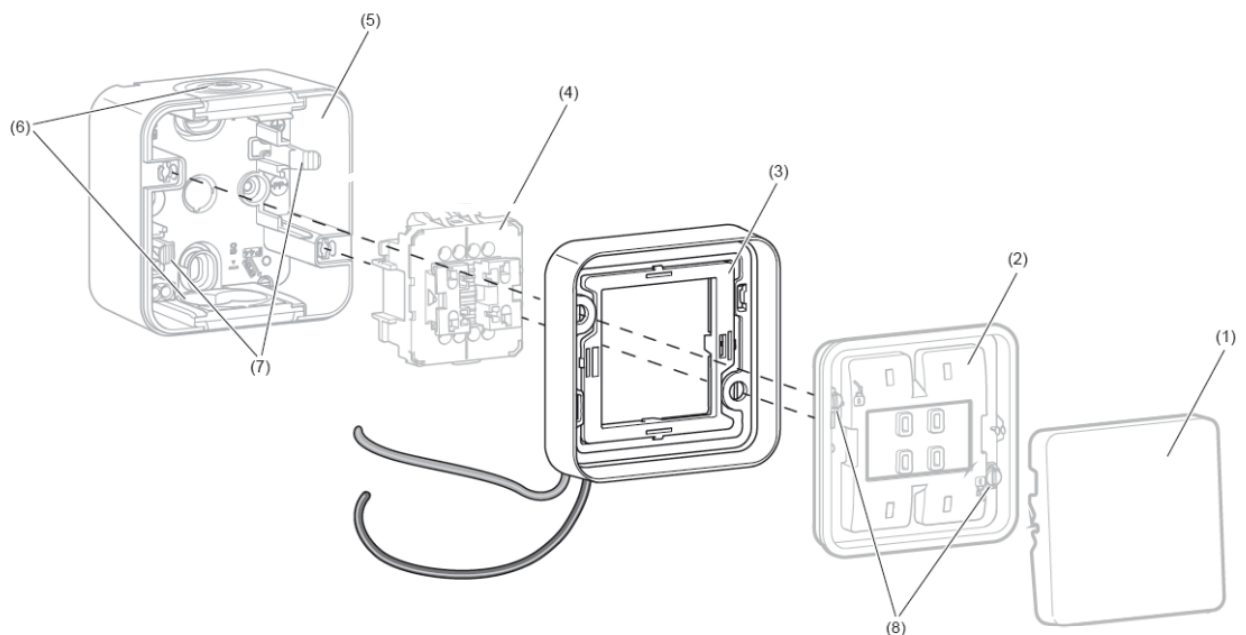
2 Design and layout of the device

Figure 1

- (1) Rocker with notches
- (2) Sealing
- (3) Illuminated frame
- (4) Switch insert
- (5) Housing, bottom part
- (6) Cable entries
- (7) Mountings for fixation of the insert
- (8) Quick-release bayonet connectors

3 Function

Correct use

The illuminated frame is to be used for the orientation lighting or control lighting of switches of the surface-mounted water-resistant range W.1.

- Surface-mounted installation on housing bottom parts 1-/2gang of the product line W.1.

4 Information for electricians

4.1 Installation and electrical connection



DANGER!

Touching live parts can result in an electric shock.

An electric shock can be lethal.

Disconnect before working on the device or load. Take into account all circuit breakers that supply dangerous voltages to the device or load.

Preparing connection

Switches or push-buttons have been assembled.

- Remove rocker (1) on the notch from the surface-mounted device using the screwdriver.

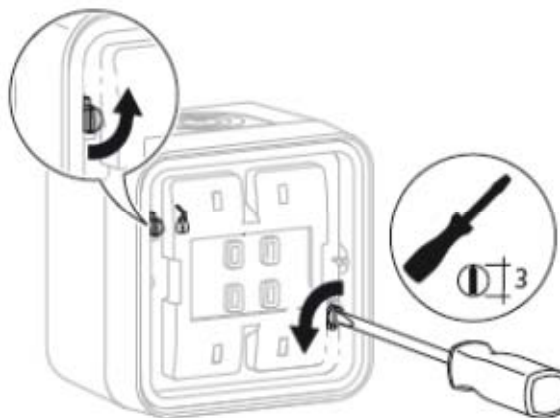


Figure 2

- Unlock quick-release bayonet connectors (8) by a ¼ turn to the left with the screwdriver (Figure 2).
- Remove frame with sealing from the housing bottom part (5).

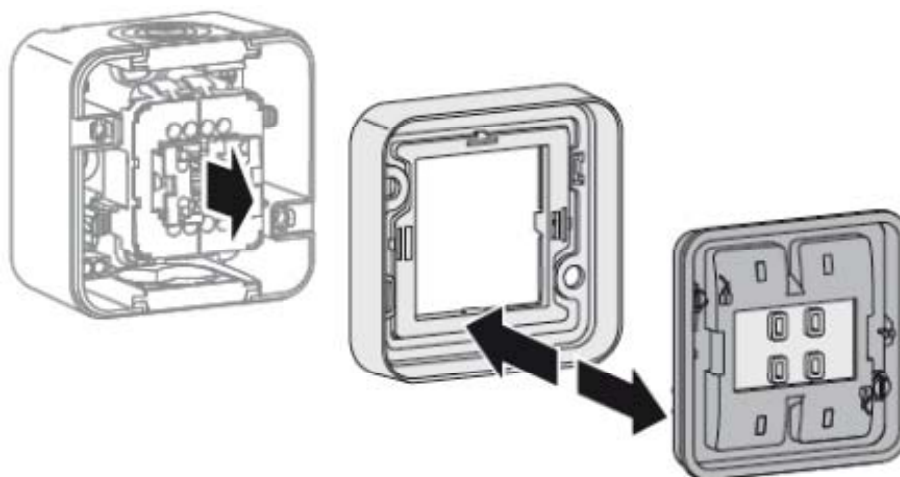


Figure 3

- Detach seal (2) from the frame (Figure 3).
- i** The frame is replaced by the illuminated frame and no longer required.

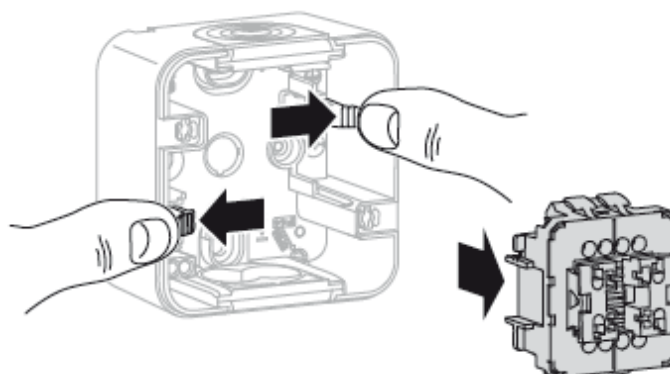


Figure 4

- Press mountings (7) outwards on each side and remove the insert (4) from the housing bottom part (Figure 4).

Connecting insert and illuminated frame

The illuminated frame can be connected for three different cases of application.

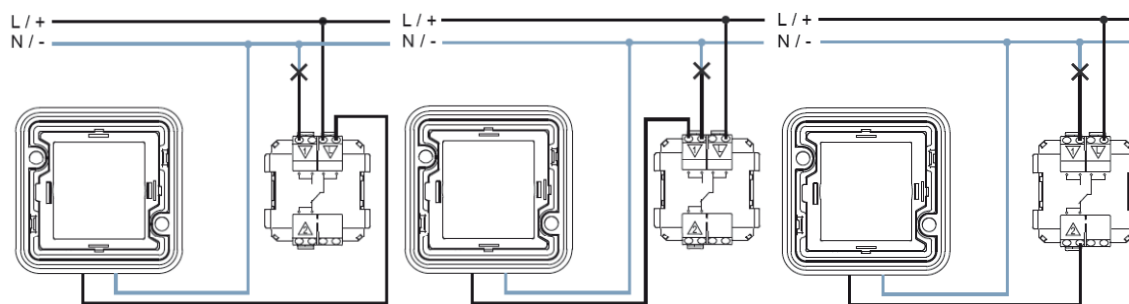


Figure 5 a

Figure 5 b

Figure 5 c

Frame, illuminated

- Permanent lighting:
The frame is illuminated permanently regardless of the switching state of the connected light (Figure 5, a).
This is necessary, for example, for installations in connection with escape routes and other safety-relevant systems.
- Control lighting:
If the light is switched OFF, the frame is unilluminated. After switching the light ON, the frame is illuminated (Figure 5, b).
This is used if the control section is outside the room where the lighting is to be switched.
- Orientation lighting:
If the light is switched OFF, the frame is illuminated. After switching the light ON, the frame is unilluminated (Figure 5, c).
This can be applied in rooms without daylight, such as cellars, garages or similar.

The housing bottom part is mounted on the wall.

- Remove the cable entry (6) top/bottom from the housing bottom part depending on the lead.
- Push the lead through the cable entry and insert the cable entry into the housing bottom part again.

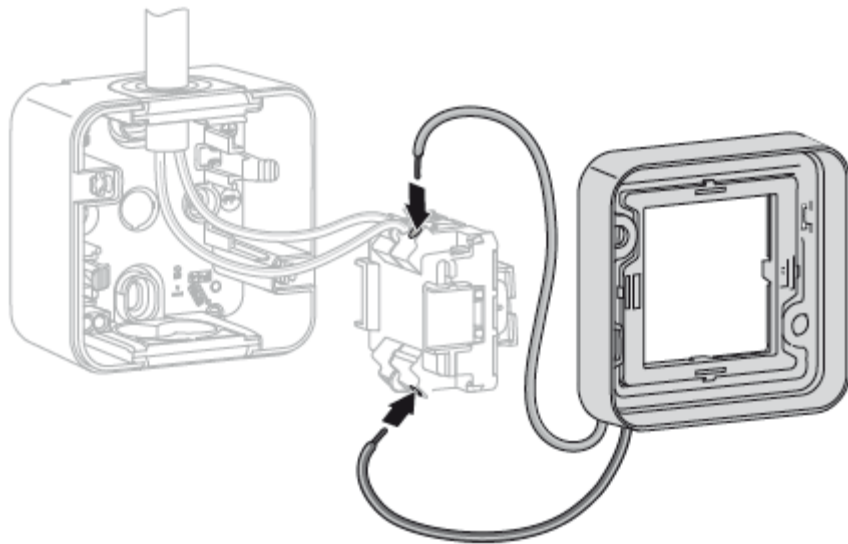


Figure 6

- Wire the phase and load line with insert (4) (Figure 5 + 6).
- Connect illuminated frame (3) for the orientation lighting or control lighting (Figure 5 + 6).

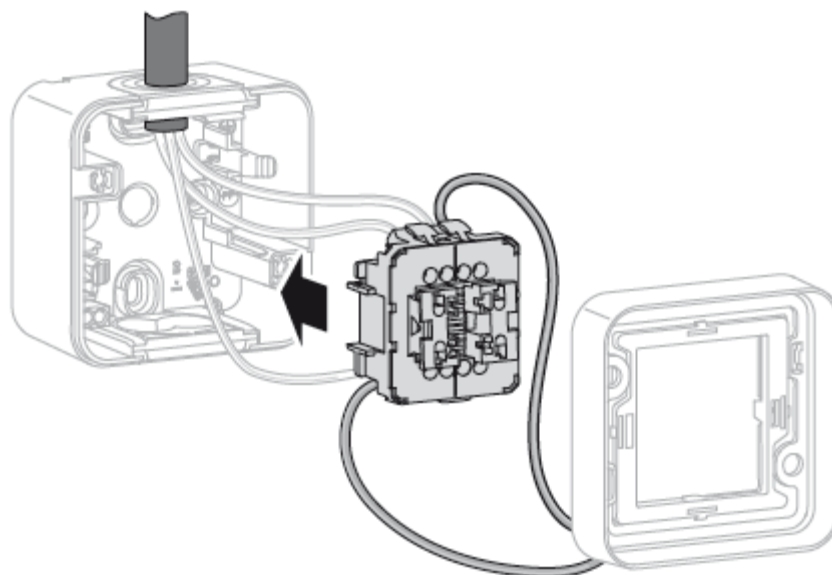


Figure 7

- Reinsert the insert (4) in the housing bottom part until it locks into place on the mountings (7) (Figure 7).

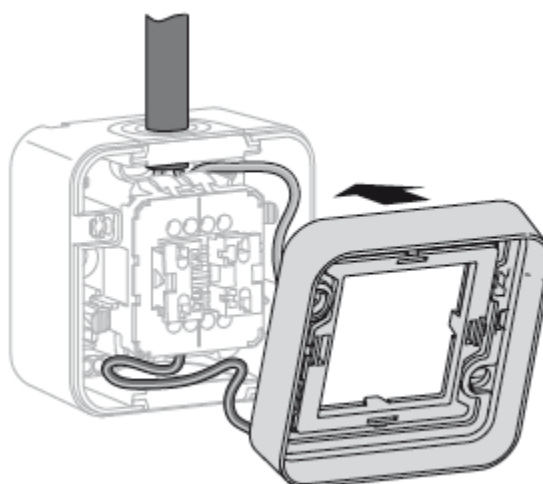


Figure 8

- Place the illuminated frame (3) in correct position onto the housing bottom part (Figure 8).
- i** When doing so, make sure that the cables in the housing are laid in such a way that they cannot get damaged.

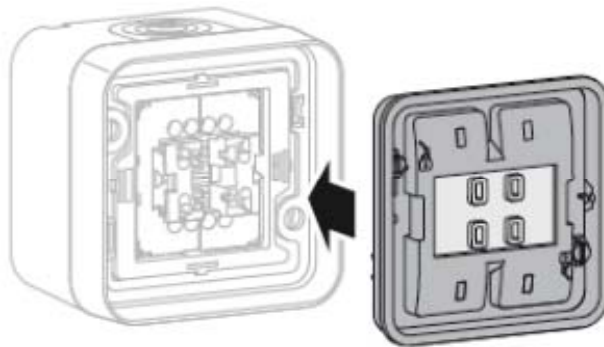


Figure 9

- Lock the sealing (2) into place in the frame (Figure 9).

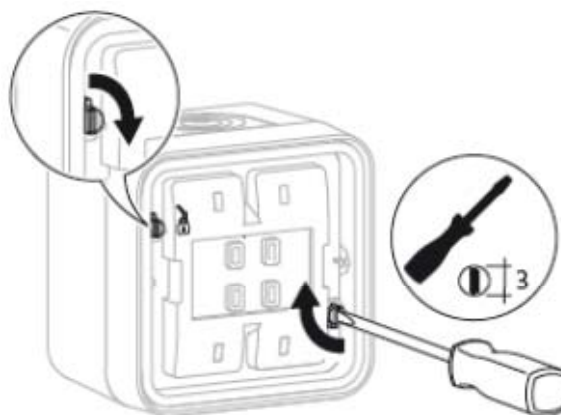


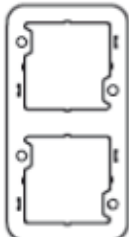
Figure 10

- Lock the frame over the quick-release bayonet connectors (8) by a ¼-turn to the right with the screwdriver in the housing bottom part (Figure 10).
- Put on rocker (1) and lock into place in the insert (4).
The device can be commissioned.

5 Appendix

5.1 Technical data

Design	Order no.	Colour	Operating voltage/ Rated current
	1338 35 02	white	DC 12 ... 24 V=/ 0.3 ... 0.6 mA
	1338 35 03	blue	DC 12 ... 24 V=/ 2.5 ... 5 mA
	1338 35 12	white	AC 230 V~/ 0.3 mA
	1338 35 13	blue	AC 230 V~/ 5 mA

Design	Order no.	Colour	Operating voltage/ Rated current
	1339 35 12	white	AC 230 V~/ 0.6 mA
	1339 35 13	blue	AC 230 V~/ 10 mA

5.2 Warranty

We reserve the right to make technical and formal changes to the product in the interest of technical progress.

Our products are under guarantee within the scope of the statutory provisions.

If you have a warranty claim, please contact the point of sale or ship the device postage free with a description of the fault to the appropriate regional representative.

5.3 Address of manufacturer

Berker GmbH & Co. KG

Klagebach 38

58579 Schalksmühle/Germany

Phone: + 49 (0) 23 55/905-0

Telefax: + 49 (0) 23 55/90 5-111

www.berker.com